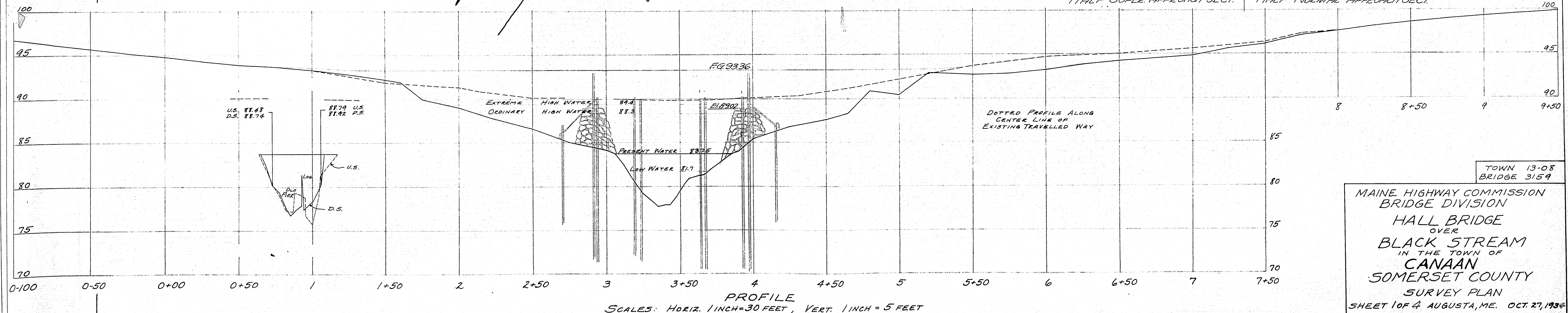
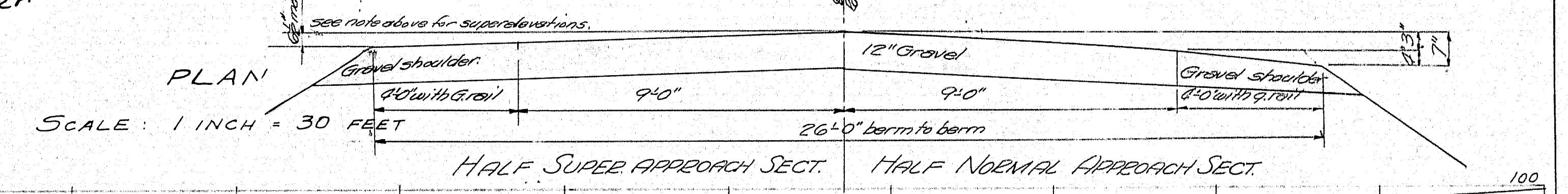


$\Delta = 29^{\circ}30' L$   
 $D = 5^{\circ}00'$   
 $T = 301.79$   
 $L = 590.00$   
 $R = 1,146.28$   
 $E = 39.07$   
 $P.I. = 6+01.79$

NOTE: Normal approach section of Sta 8+00 from Sta 8+00 start superstructure so that of Sta 8+75 a superstructure of 1/2 will be obtained. This minimum will hold to Sta 8+40. From Sta 8+40 start return to normal crown.

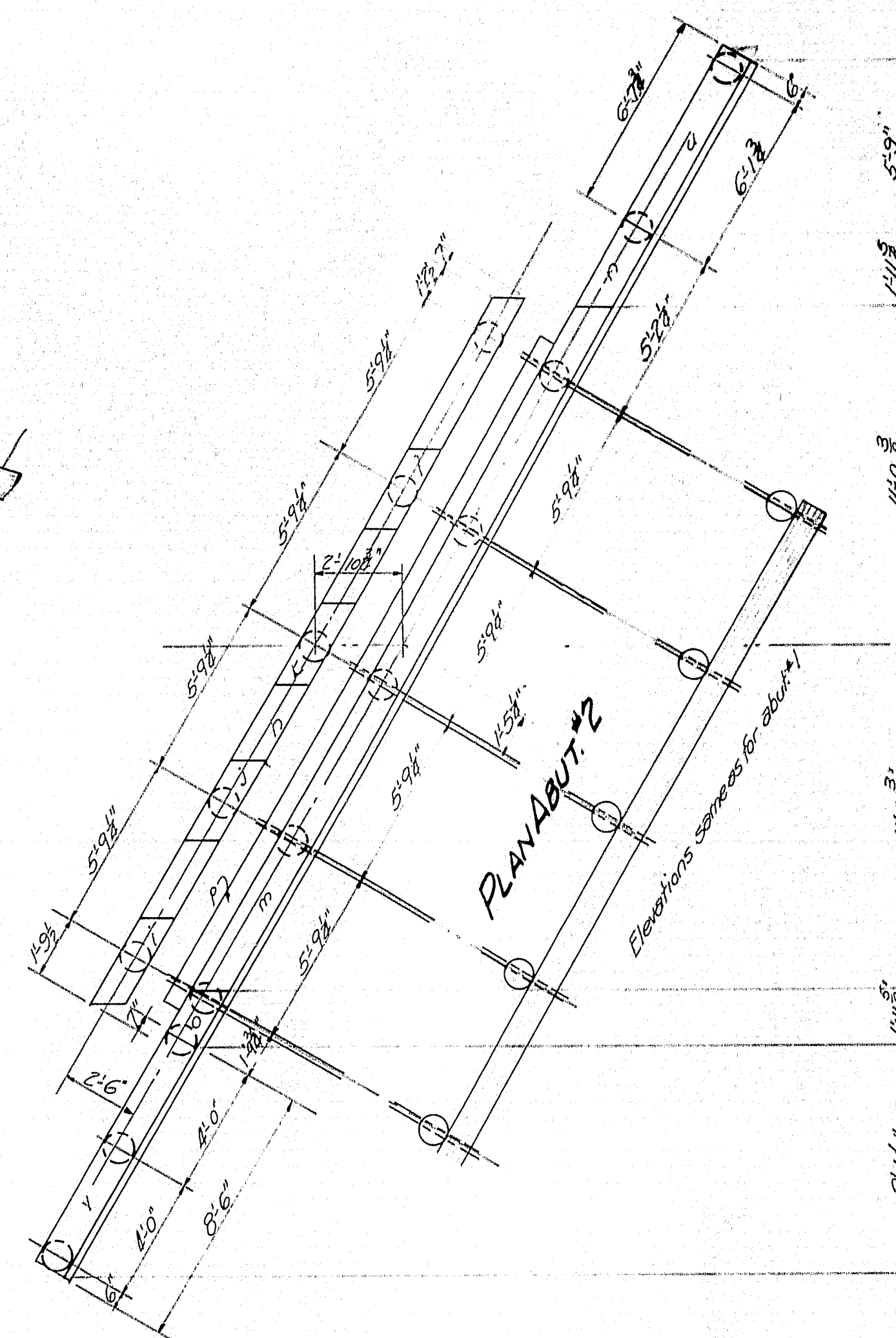
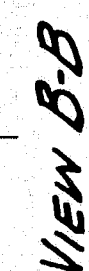
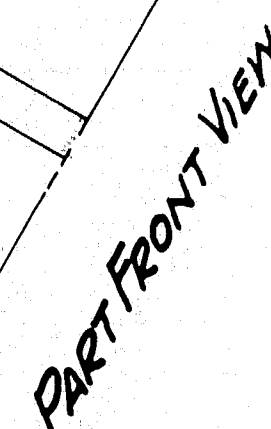
**NOTES**  
**EXISTING SUPERSTRUCTURE** - Two 18" steel beams with 2 transverse log floor beams hung from third points of steel beams. Log stringers with 3" transverse and 2" longitudinal plank. Stringers and beams, fair. Plank poor.  
**EXISTING SUBSTRUCTURE** - Abutments of fairly split granite, in large blocks, laid dry. Reported to rest upon piles about 12' long. In good condition, except signs of movement evident.  
**STREAM** - Sluggish current at low stage and moderate, quiet current at high stage. Low stage reported at Elev. 81.7. Present level at Elev. 83.75 caused by recent rains. Ordinary high water at Elev. 88.3. Extreme high water reported at Elev. 89.4. Stream has been used for driving 18' logs up to about 1924. Reported timber exhausted. Water is back water from Sibley Pond and Carrabassett Stream.  
**FOUNDATION** - Peat mud overlying compact deposit of very fine sand. Sounding at Sta. 3+10, penetrated easily by hand by one man to Elev. 74.7 and by hand by two men to Elev. 73.3. Drove easily to Elev. 56.0 and ceased driving at Elev. 53.6 at rate of 1/2" per blow.  
**EXISTING APPROACHES** - Of improved gravel except between bridge + Sta. 7+75.



TOWN 13-08  
 BRIDGE 3159  
 MAINE HIGHWAY COMMISSION  
 BRIDGE DIVISION  
 HALL BRIDGE  
 OVER  
 BLACK STREAM  
 IN THE TOWN OF  
 CANAAN  
 SOMERSET COUNTY  
 SURVEY PLAN  
 SHEET 1 OF 4 AUGUSTA, ME. OCT. 27, 1934

SURVEYED BY Beckman 7-28-34  
 PLOTTED AND TRICED BY Beckman





**END VIEW**  
BEARING

PLAN PIER 1  
of #2 similar

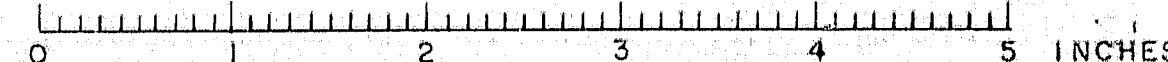
Town 13-08  
Bridge 3159

State Highway Commission  
Bridge Division

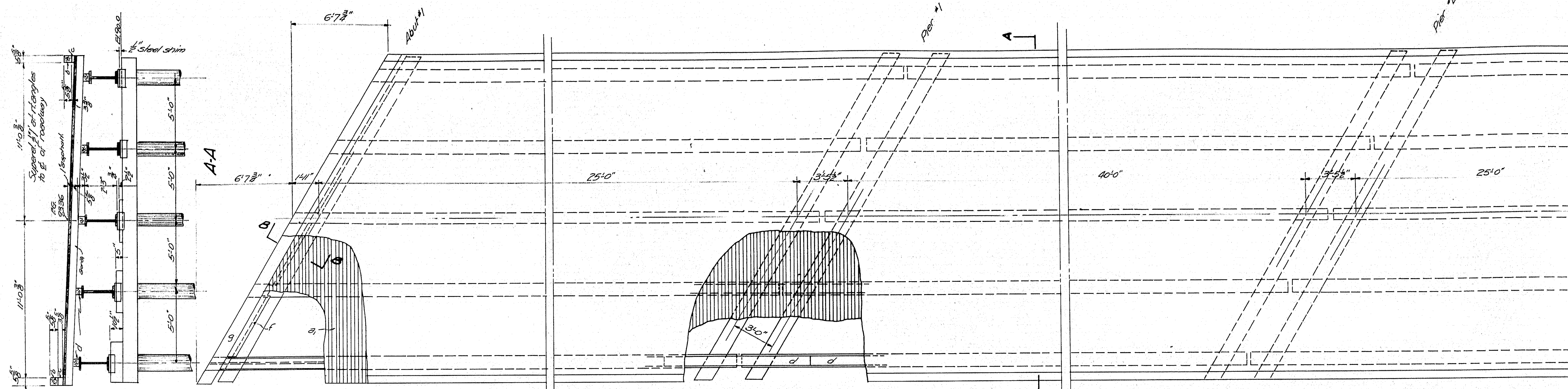
HALL BRIDGE  
over  
BLACK STREAM  
in the town of  
CANAN  
SOMERSET Co.  
SUBSTRUCTURE PLAN

Sheet 2 of 4 August, Me. May 1936

19-175



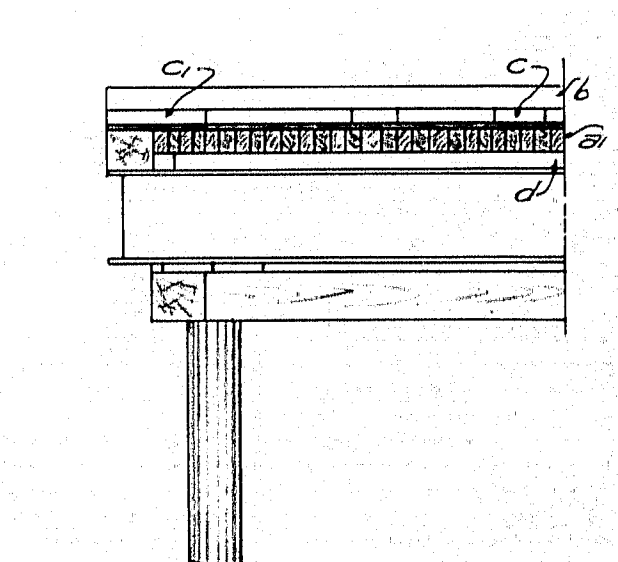




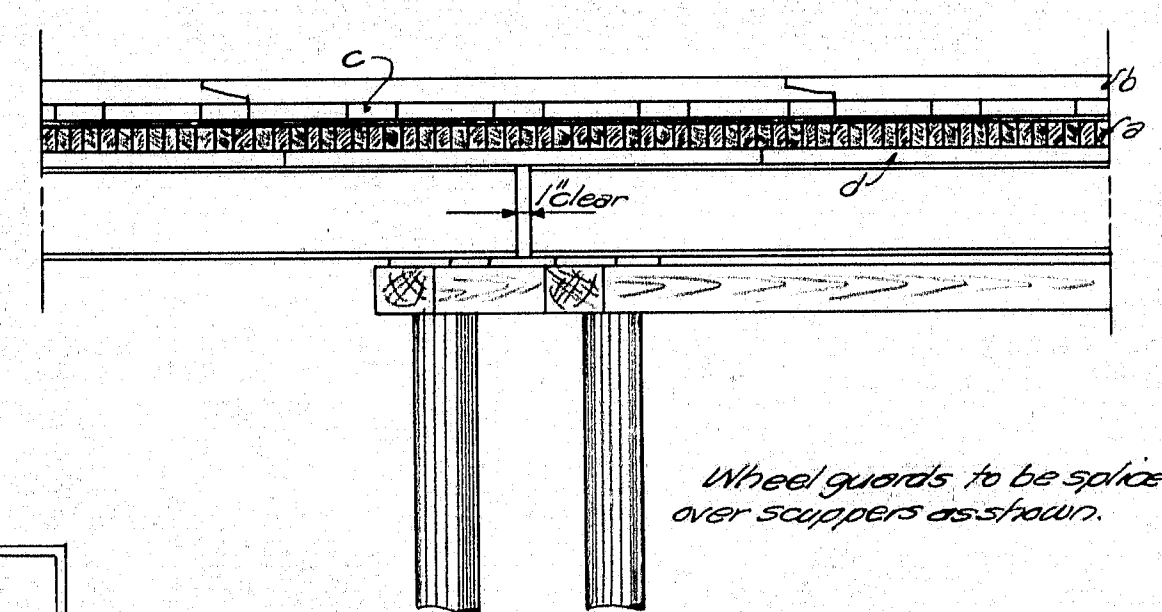
Splicing pieces to top of least 5'-0\"/>

### PART PLAN FLOOR

Note: place scupper blocks at each rail post & also at center of rail panels. All scuppers to be 1'-0\"/>



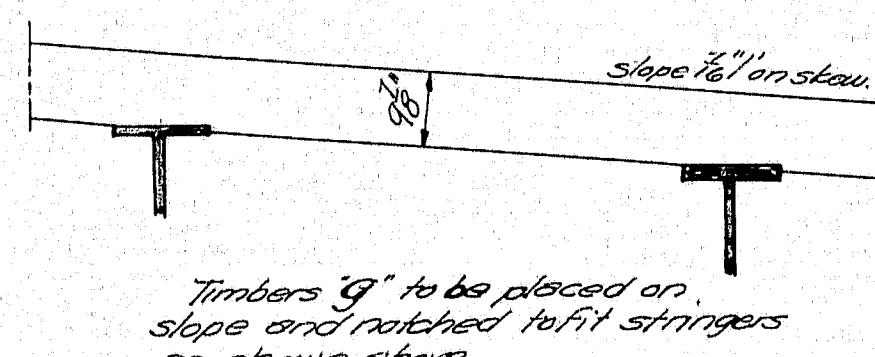
PART SIDE VIEW



PART SIDE VIEW

### DETAIL OF ANGLE AT ABUTS.

This angle to be bolted to the timber 'g' and a short splicing piece 'f' will be bolted to the 'L' for supporting strip floor.



DETAIL SHOWING ANGLE ON OUTSIDE OF STRINGERS

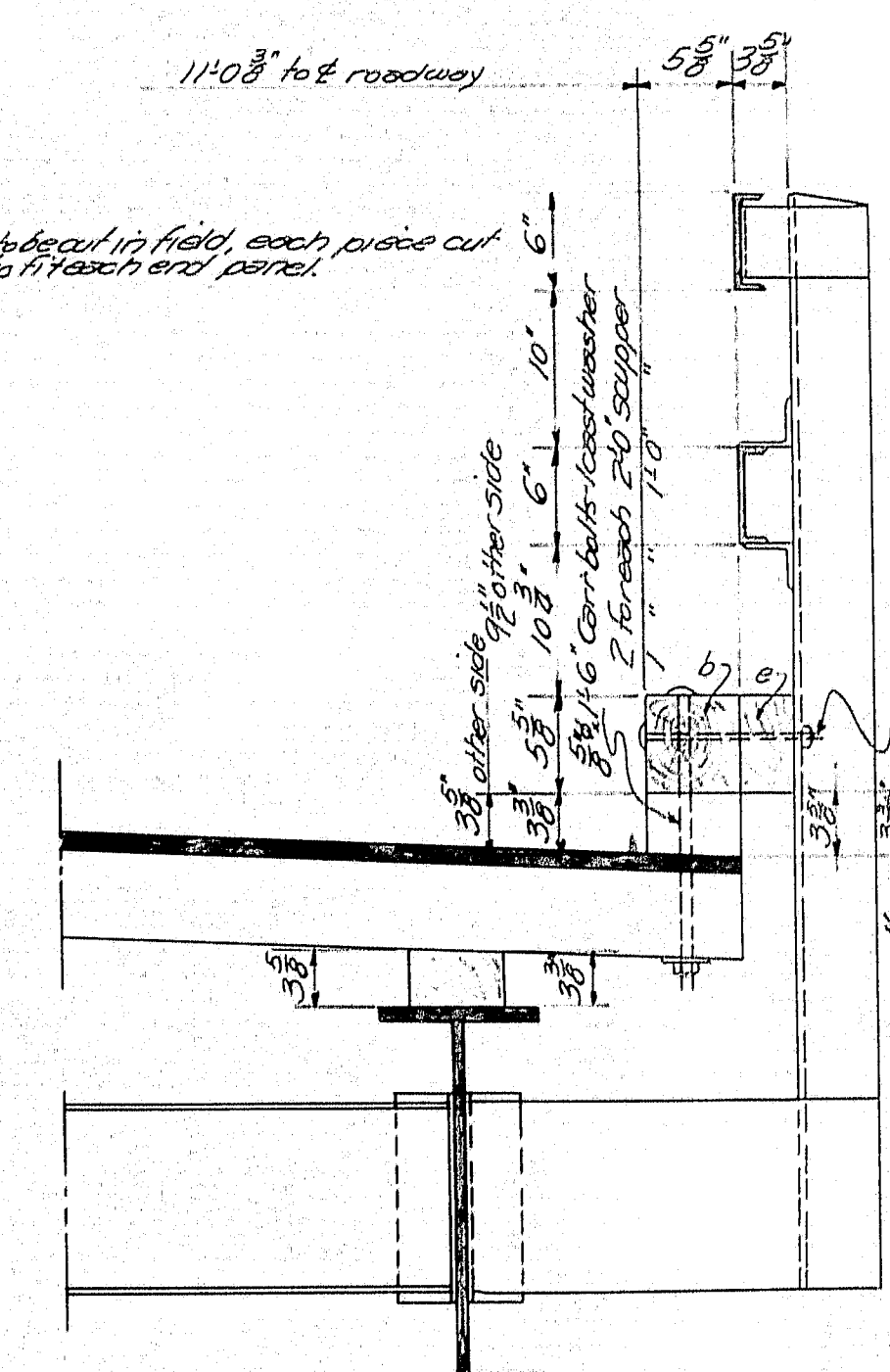
| BOLT SCHEDULE |            |          |             |          |                     |
|---------------|------------|----------|-------------|----------|---------------------|
| Size          | Length     | Quantity | Type        | Washers  | Location            |
| 3/8"          | 1'-6"      | 66       | carriage    | 66 cast  | scupper blocks      |
| "             | 0'-10 1/2" | 32       | "           | "        | angle to rail post  |
| "             | 0'-5"      | 270      | "           | "        | spacers             |
| "             | 0'-1 1/2"  | 32       | "           | "        | end pieces          |
| "             | 0'-5"      | 20       | "           | "        | ls to fl            |
| 3/4"          | 0'-10"     | 60       | lag screws  | "        | beam p/s            |
| 3/8"          | 1'-6"      | 140      | machine     | 280 cast | bracing             |
| "             | 1'-9"      | 160      | "           | 320 "    | "                   |
| #28           | 0'-6"      | 76       | wood screws | "        | exp plates          |
| 3/8"          | 1'-0"      | 16       | carriage    | "        | ls to g             |
| "             | 0'-5"      | 32       | "           | "        | end spacers         |
| "             | 1'-6"      | 12       | drift bolts | "        | three blocks per    |
| 3/8"          | 1'-6"      | 70       | "           | "        | cap timber to piles |
| 3/8"          | 2'-0"      | 68       | machine     | 96 cast  | pier bracing        |
| "             | 2'-3"      | 16       | "           | 32 "     | "                   |

| TIMBER SCHEDULE |          |           |                 |        |                             |
|-----------------|----------|-----------|-----------------|--------|-----------------------------|
| Mark            | No. reqd | Dress     | Fin. Size       | Length | Location                    |
| B               | 390      | DAS       | 2 3/4" x 5 3/8" | 23'-0" | strip floor (full length)   |
| a               | 61       | "         | "               | 20'-0" | " " (stayed and panels)     |
| b               | 8        | "         | 5 3/8" x 5 3/8" | 20'-0" | wheel guard                 |
| c               | 58       | "         | 3 3/8" x 10"    | 1'-0"  | scupper blocks              |
| c               | 4        | "         | "               | 2'-0"  | "                           |
| d               | 20       | D6 sides  | 10 x 9 3/8"     | 26'-0" | 3/8" x 3 3/8" splicing pcs. |
| e               | 32       | DAS       | 3 3/8" x 5 3/8" | 0'-6"  | rail post blocks            |
| f               | 8        | D6 sides  | 3 3/8" x 6"     | 5'-6"  | end splicing pcs.           |
| fi              | 4        | "         | "               | 2'-0"  | " " " outside               |
| g               | 2        | D10 sides | 10 x 9 3/8"     | 27'-1" | end timbers                 |
| h               | 2        | D12 sides | 9 3/8" x 12"    | 26'-8" | end beam caps               |
| i               | 4        | "         | 10 x 12"        | 3'-7"  | blocks beam spans 2         |
| j               | 4        | "         | 7 1/2" x 12"    | 3'-7"  | " " " "                     |
| k               | 4        | "         | 4 3/8" x 12"    | 3'-7"  | " " " "                     |
| l               | 4        | "         | 2 3/8" x 12"    | 3'-7"  | " " " "                     |
| m               | 2        | "         | 9 3/8" x 12"    | 30'-0" | backwall timber             |
| n               | 2        | "         | 6 3/8" x 12"    | 3'-0"  | top wing (perpendicular)    |
| o               | 2        | "         | "               | 2'-8"  | " " " "                     |
| p               | 2        | "         | 6 x 8           | 20'-0" | abuts                       |
| q               | 60       | "         | 3 x 8           | 3'-6"  | " bracing                   |
| r               | 20       | "         | "               | 8'-0"  | " " " "                     |
| s               | 2        | "         | "               | 20'-0" | " " " "                     |
| t               | 8        | "         | "               | 16'-0" | " " " "                     |
| u               | 2        | DAS       | 5 3/8" x 1 1/2" | 9'-0"  | wing caps                   |
| v               | 2        | "         | "               | 11'-0" | " " " "                     |
| w               | 2        | D12 sides | 10 1/2" x 12"   | 3'-7"  | blocks beam span 2          |
| x               | 2        | "         | 5 x 12          | 3'-7"  | " " " "                     |
| y               | 2        | "         | 8 1/2" x 12"    | 3'-7"  | " " " "                     |
| z               | 4        | "         | 9 3/8" x 12"    | 26'-0" | pier caps                   |
| aa              | 4        | "         | "               | 5'-6"  | " ends                      |
| bb              | 40       | "         | 3 x 8           | 8'-6"  | " bracing                   |
| cc              | 16       | "         | 3 x 8           | 8'-0"  | " " " "                     |
| dd              | 8        | "         | 3 x 8           | 30'-0" | " " " "                     |
| ee              | 8        | "         | 3 x 8           | 38'-0" | " " " "                     |

3' planting 1 M.B.M. back abut.

| PILES |        |                        |
|-------|--------|------------------------|
| No.   | Length | Location               |
| 10    | 35'-0" | Abut. backwall & wings |
| 5     | 32'-0" | " " " BRACING          |
| 14    | 35'-0" | Pier #1                |
| 14    | 32'-0" | " #2                   |
| 5     | 28'-0" | Abut. #2 BRACING       |
| 10    | 30'-0" | " #2 BACKWALL WINGS    |
| 12    | 25'-0" | ANCH. & TIES           |

Exact length of piles to be determined in field by the Engineer from piles driven by the Contractor.



DETAIL AT CURBS

State Highway Commission  
Bridge Division

**HALL BRIDGE**  
over  
**BLACK STREAM**  
in the town of  
**CANAAN**  
**SOMERSET CO.**

**FLOOR PLAN**

Sheet 3 of 4 August 11, 1935

Town 13-08  
Bridge 3159



